



2023

CITY REPORT: Sugar Creek



JACKSON COUNTY
PUBLIC HEALTH

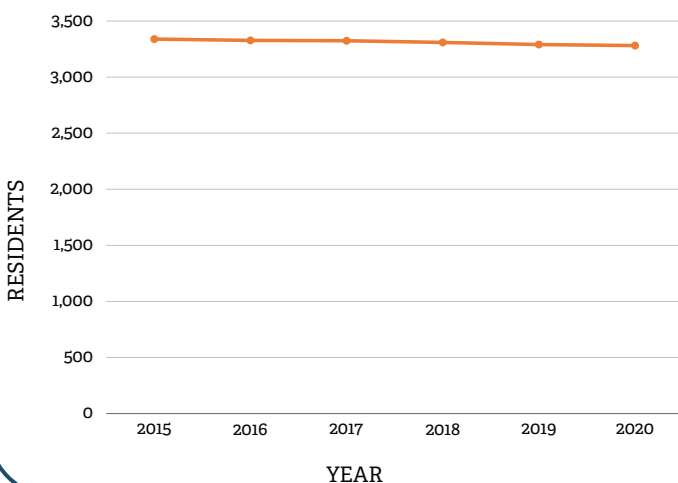


DEMOGRAPHICS

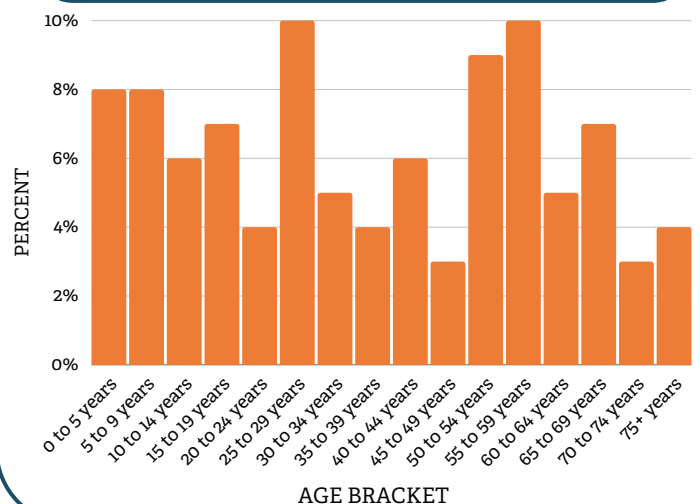
City Summary: Sugar Creek

- According to 2016-2020 population estimates, 3,281 residents live within Sugar Creek as of 2020.
- There was a 1.74% decrease in population from 2015 to 2020.
- Sugar Creek is comprised of 47% female, and 53% male residents.
- Racial demographics in Sugar Creek are as follows: 88% White; 6.71% Two or More; 3.81% American Indian & Alaskan Native; 0.98% Other; 0.58% Black.
- Of those residents, 8% also identify as Hispanic or Latino.
- Fourteen percent of households reported speaking a language other than English at home.
- Veterans make up 14% of Sugar Creek population and 32% of those veterans have at least one disability.
- 2 in 10 residents of Sugar Creek have a disability.
- Half of the population with disabilities face ambulatory difficulty.

POPULATION BY YEAR, 2015-2020



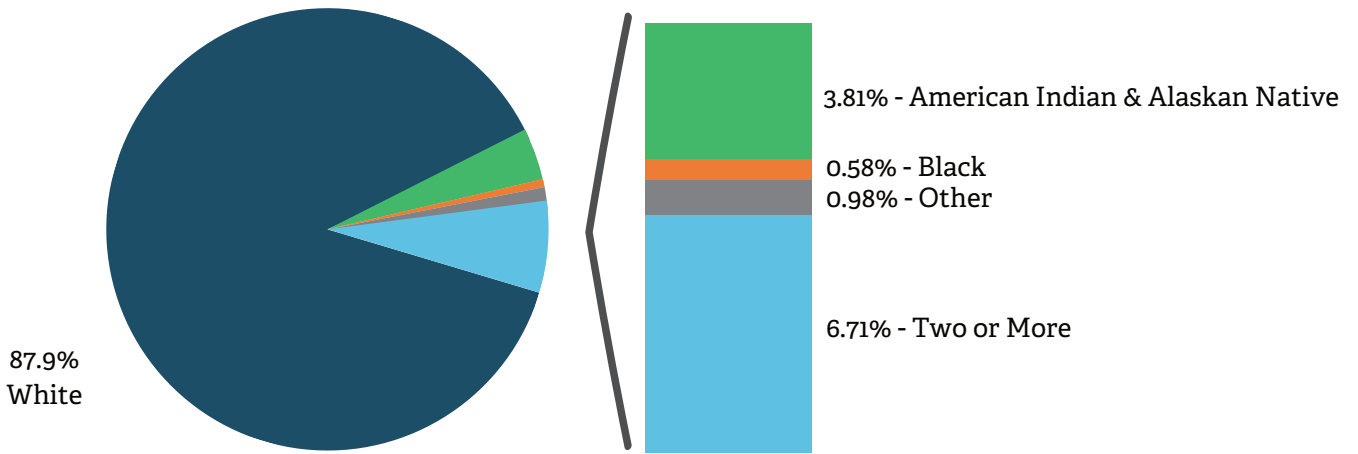
AGE, 2020



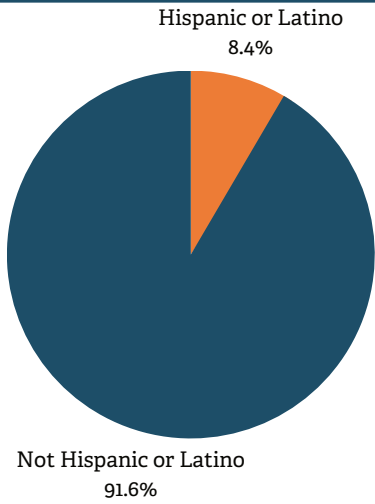


DEMOGRAPHICS CONTINUED

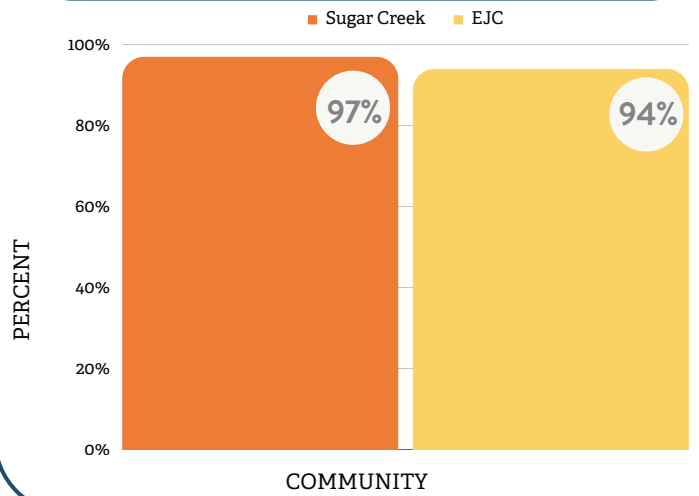
RACIAL DIVERSITY, 2020



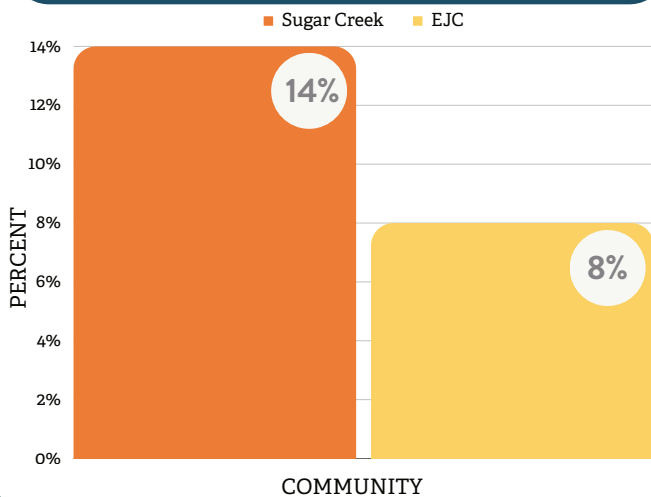
ETHNICITY, 2020



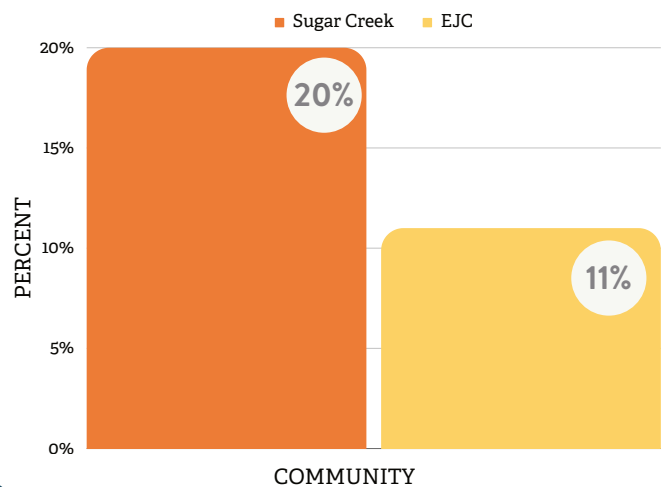
ENGLISH SPOKEN AT HOME, 2020



VETERANS, 2020



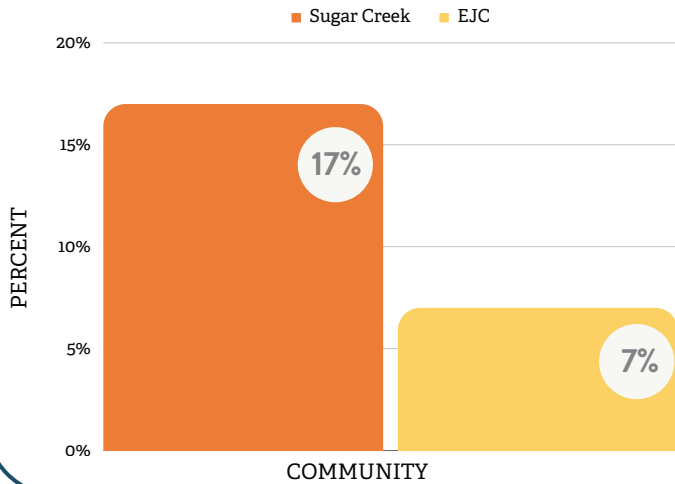
PEOPLE WITH DISABILITIES, 2020



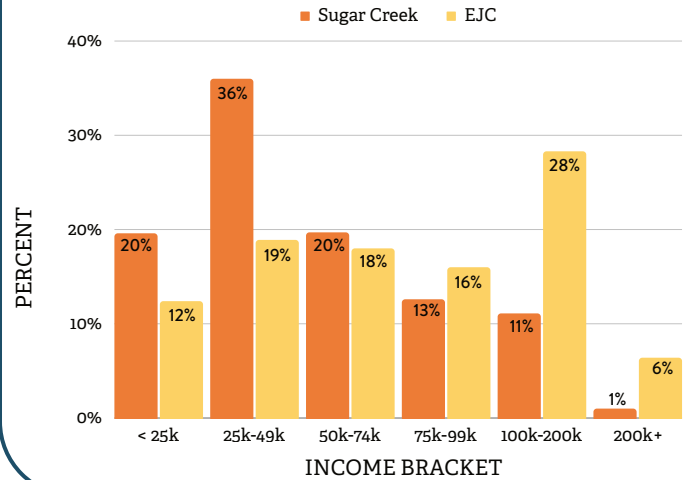


SOCIOECONOMICS

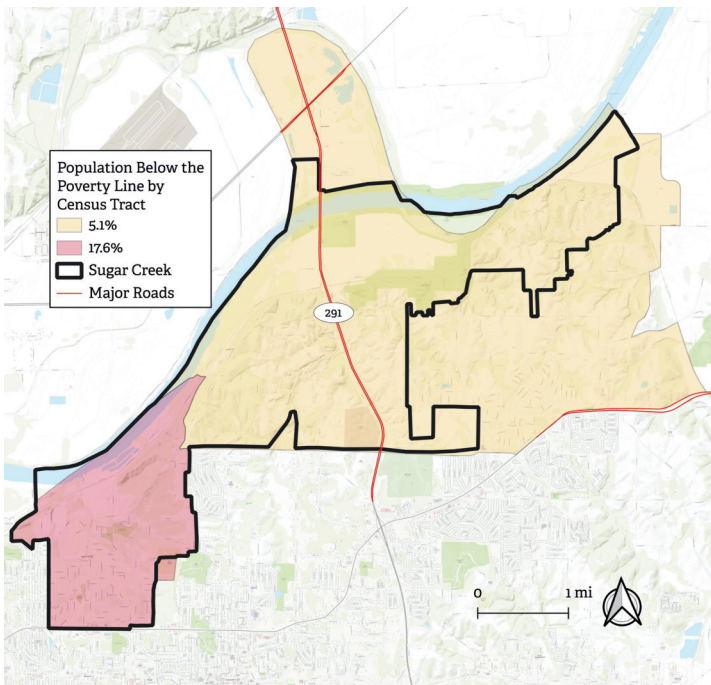
POVERTY, 2020



INCOME, 2020

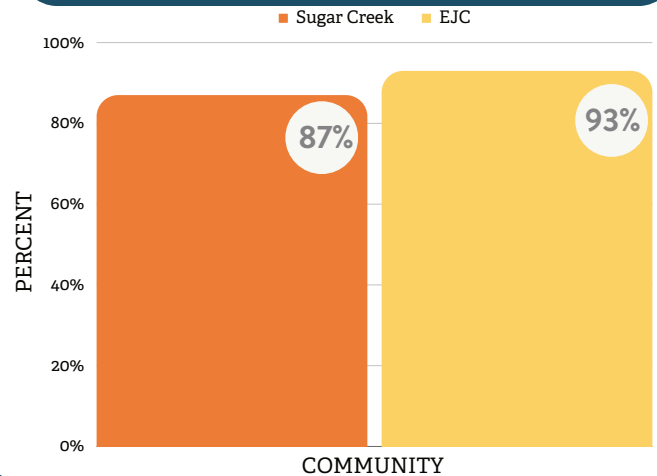


POPULATION LIVING BELOW THE POVERTY LINE IN SUGAR CREEK, 2020

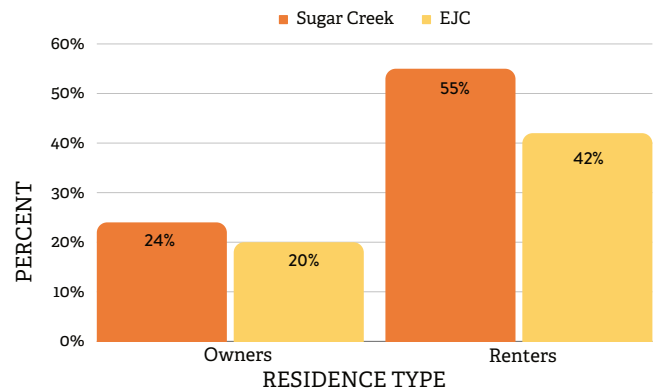


City boundaries and US Census Tracts do not always line up which causes inconsistencies as seen above.

PEOPLE WITH HEALTH INSURANCE, 2020



COST BURDENED OWNERS AND RENTERS, 2020

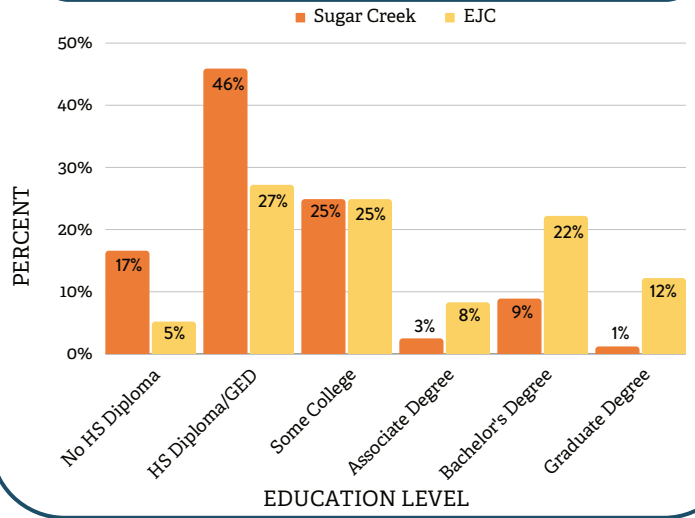


A household that spends more than 30% of its income on housing costs is considered cost-burdened.

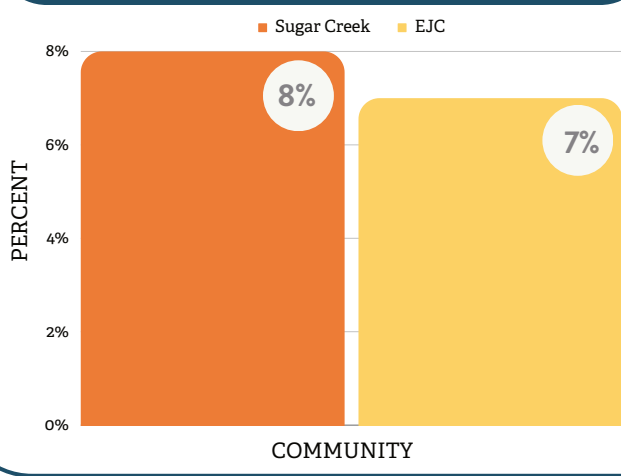


SOCIOECONOMICS CONTINUED

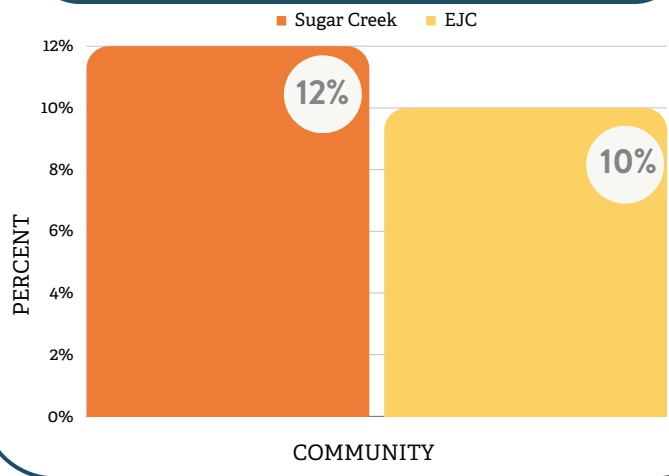
EDUCATIONAL ATTAINMENT, 2020



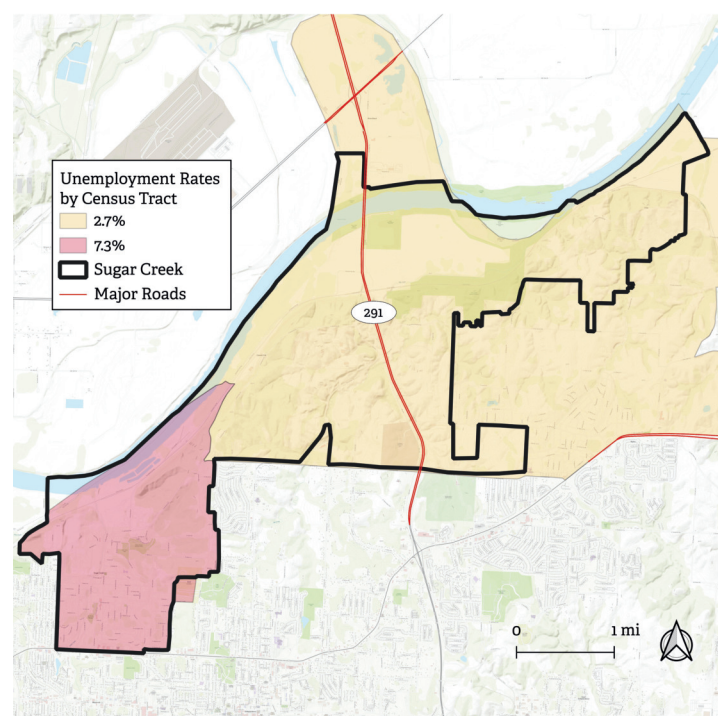
PEOPLE HOLDING MULTIPLE JOBS, 2020



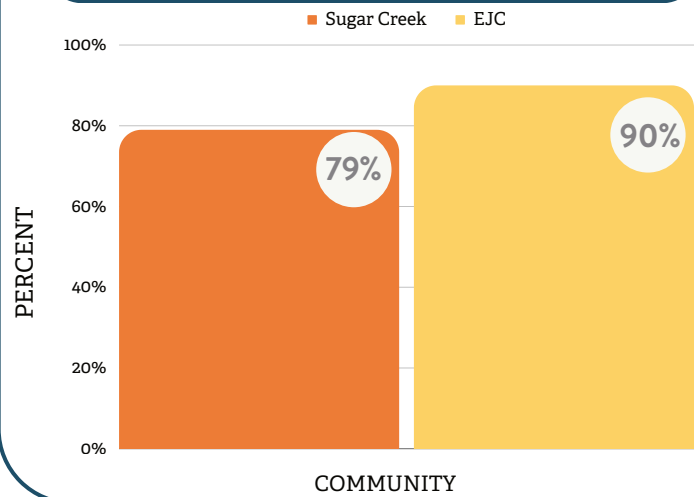
SINGLE FEMALE HEAD OF HOUSHOLD, 2020



UNEMPLOYMENT RATES IN SUGAR CREEK, 2020



HOME INTERNET ACCESS, 2020

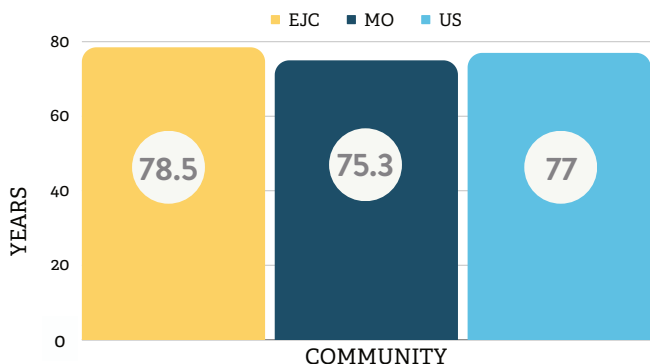


City boundaries and US Census Tracts do not always line up which causes inconsistencies as seen above.



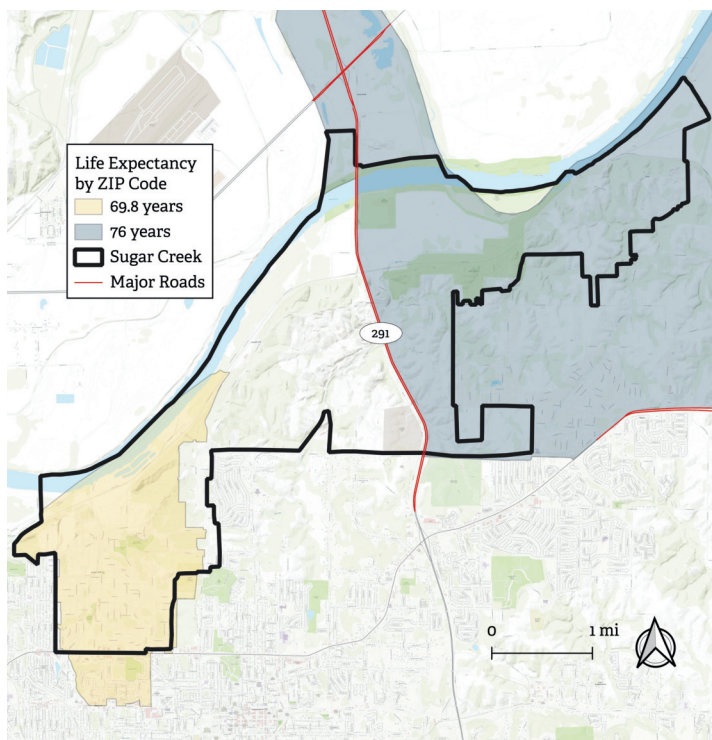
HEALTH OUTCOMES

LIFE EXPECTANCY, 2020



Life Expectancy for Sugar Creek specifically is not available due to data suppression.

LIFE EXPECTANCY IN SUGAR CREEK, 2011-2020



City boundaries and US ZIP Codes do not always line up which causes inconsistencies as seen above.

HEALTH OUTCOME PREVALENCE, 2023

● HIGHER THAN EJC ● EQUAL TO EJC ● LOWER THAN EJC

	SUGAR CREEK	EJC
ARTHRITIS	30%	25%
ASTHMA	11%	10%
HIGH BLOOD PRESSURE	37%	32%
CANCER	7%	7%
HIGH CHOLESTEROL	38%	34%
KIDNEY DISEASE	3%	3%
COPD CHRONIC OBSTRUCTIVE PULMONARY DISEASE	11%	7%
HEART DISEASE	8%	6%
DIABETES	13%	10%
DEPRESSION	25%	23%
OBESITY	40%	36%
STROKE	4%	3%
ALL TEETH LOST	21%	14%

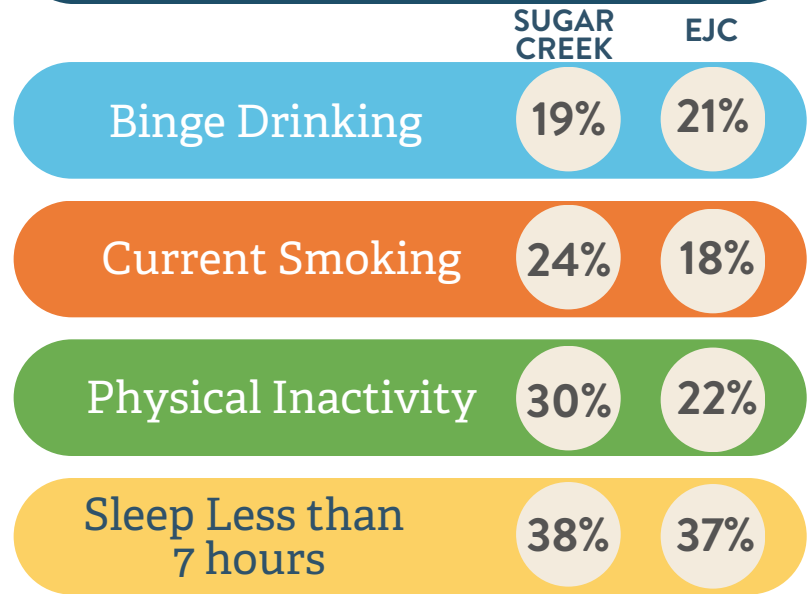


HEALTH RISK BEHAVIORS

“Health behaviors are health-related practices, such as diet and exercise, that can improve or damage the health of individuals or community members. Health behaviors are determined by the choices available in the places where people live, learn, work and play.”

~County Health Rankings, 2023

HEALTH RISK BEHAVIORS PREVALENCE, 2023



HEALTH STATUS, 2023

GENERAL HEALTH

Prevalence of fair or poor health among adults 18 and older

23%

SUGAR CREEK

16%

EJC

MENTAL HEALTH

Prevalence of not good mental health days for greater than or equal to 14 days within the past 30 days among adults 18 and older

20%

SUGAR CREEK

18%

EJC

PHYSICAL HEALTH

Prevalence of not good physical health days for greater than or equal to 14 days within the past 30 days among adults 18 and older

16%

SUGAR CREEK

12%

EJC



COMMUNITY HEALTH ASSESSMENT

Survey Results: Sugar Creek

The Community Health Assessment (CHA) Survey was randomly distributed to Eastern Jackson County (EJC) households (based on ZIP Code) in Spring 2023. The response rate for Sugar Creek was 5.6% while the overall response rate for EJC was 7%. The results that follow are representative of the respondents from Sugar Creek who took the survey.

Respondents identified as 47% female, 43% male, and 10% non-binary, other, woman/man, or prefer not to say. When looking at respondents by age range, 17.03% were 25-44, 25.53% were 45-64, and 48.94% were 65 and older. Racial diversity among respondents showed 2.13% Latino, 2.13% Two or More, and 91.49% White.

CHA SURVEY: COMMUNITY SATISFACTION

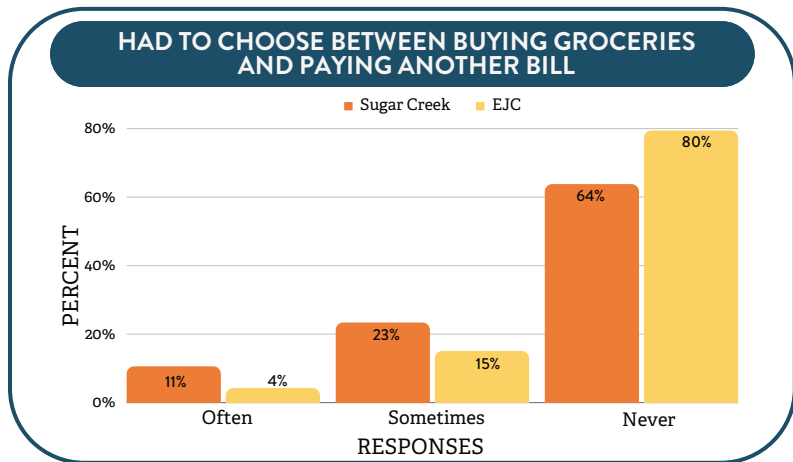
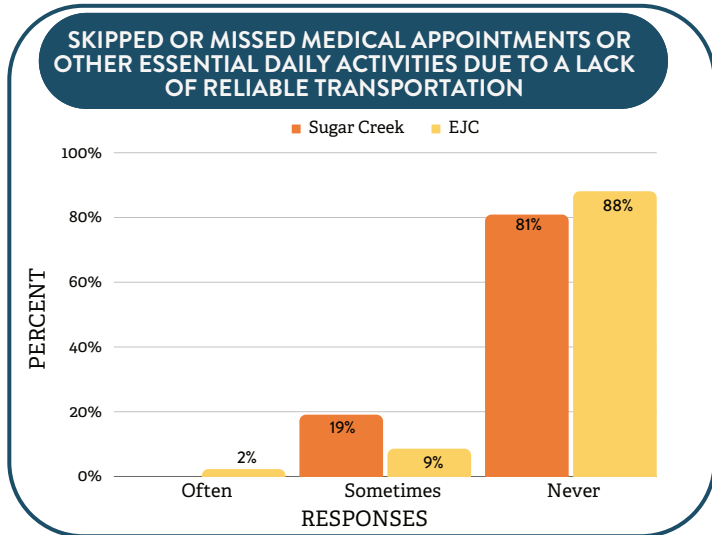
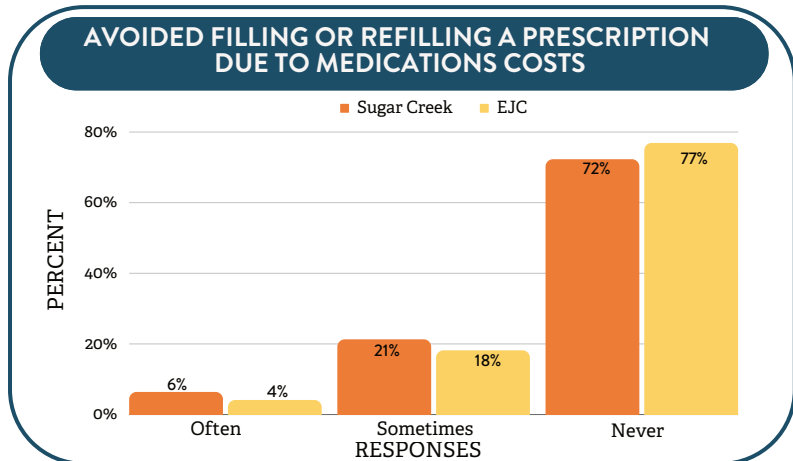
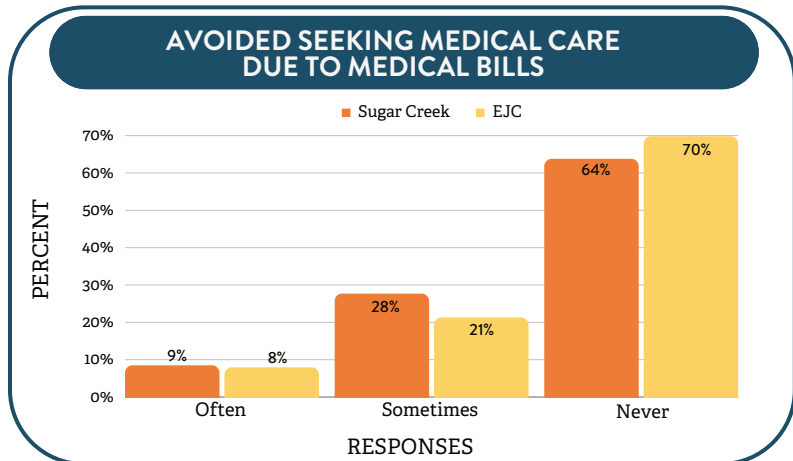
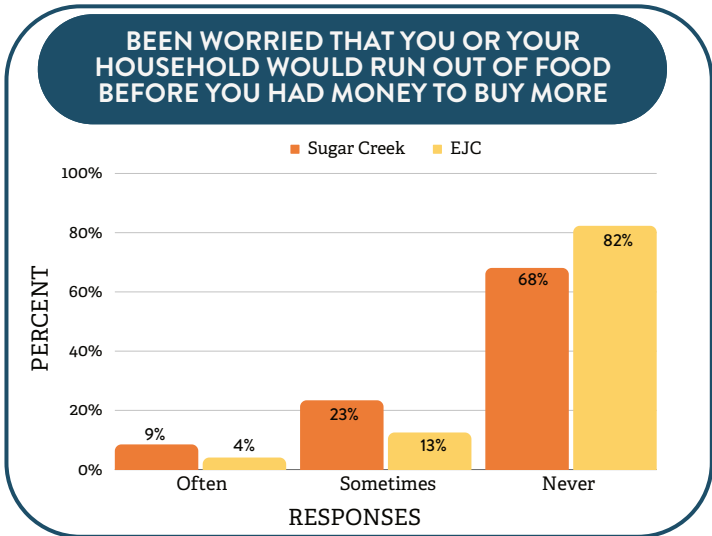
CHA Survey respondents were asked to rate their level of agreement from “Strongly Agree” to “Strongly Disagree” with statements related to qualities of their community. These eight factors are shown in the figure below. Rates show the percentage of respondents who indicated that they either “Agree” or “Strongly Agree”.



CHA SURVEY: MY HEALTH RESPONSES

CHA respondents were asked about a variety of health related experiences within the last 12 months and given the responses "Often", "Sometimes", and "Never".

Question:
In the past 12 months, have you ever...



CHA SURVEY: OVERALL HEALTH RATING

CHA respondents were asked to rate their general overall health and given the following options: Poor, Fair, Good, Very Good, and Excellent.

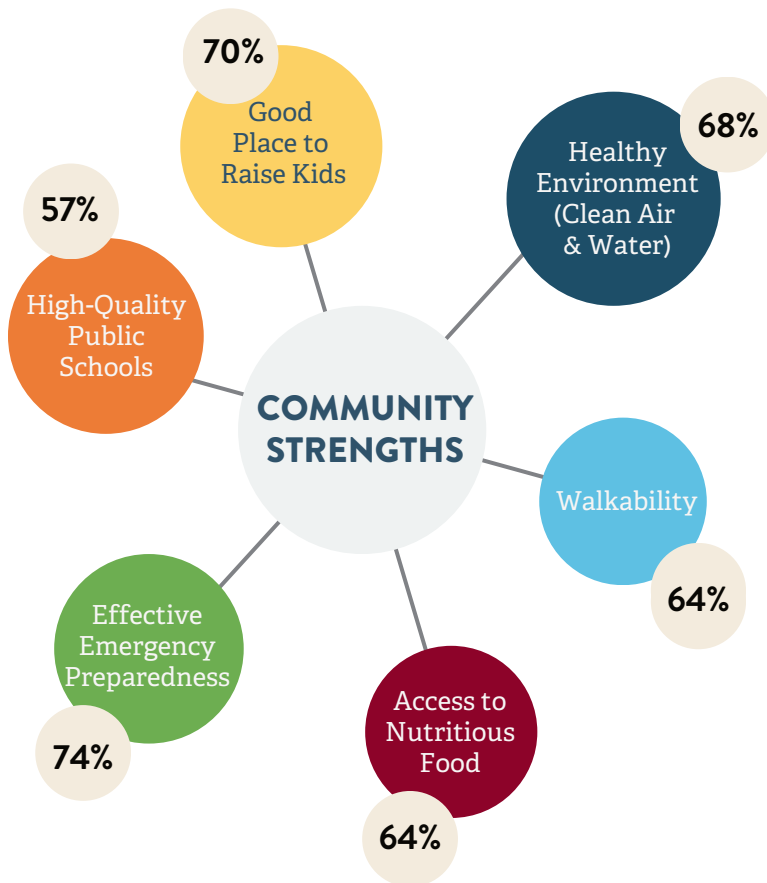
The CHA participants self-reported health rating can be found below.

EXCELLENT/
VERY GOOD
17%

GOOD
55%

FAIR/POOR
23%

CHA SURVEY: COMMUNITY STRENGTHS



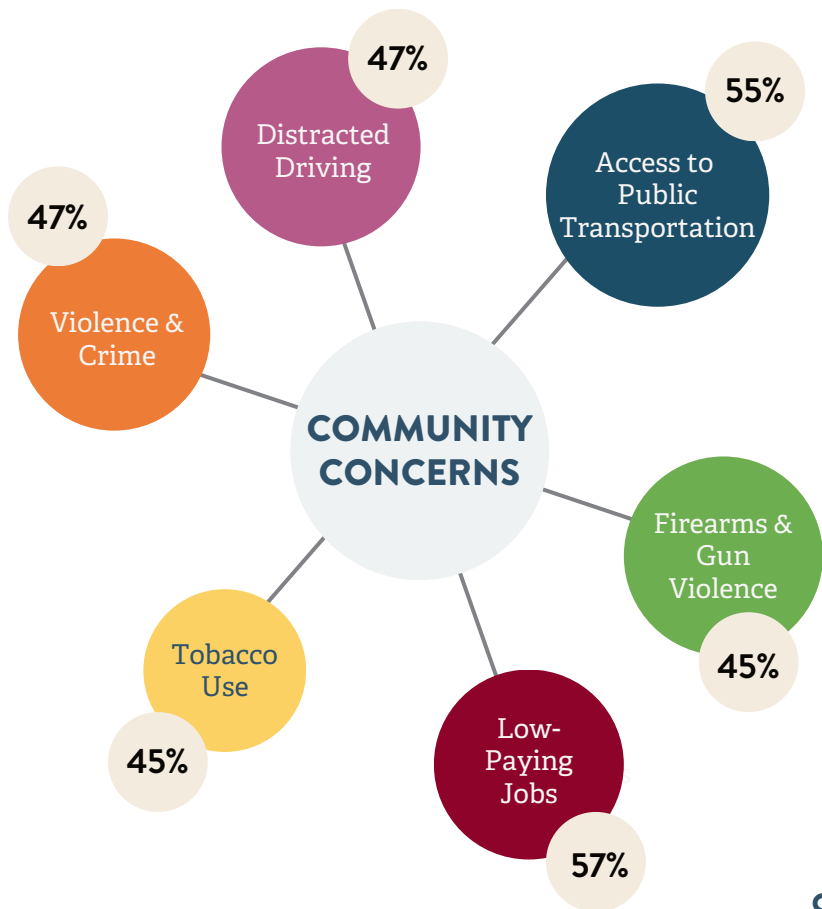
CHA Survey respondents were asked to rate a list of potential community strengths using the options “Not a Strength,” “Slight Strength,” “Moderate Strength,” “Significant Strength,” or “I don’t know.”

The diagram to the left shows the top six strengths identified by survey respondents. Rates show the percentage of respondents who selected either “Moderate Strength” or “Significant Strength.”

CHA SURVEY: COMMUNITY CONCERNS

CHA Survey respondents were also asked to rate a list of potential community concerns using the options “Not a Problem,” “Slight Problem,” “Moderate Problem,” “Significant Problem,” or “I don’t know.”

The diagram to the right shows the top six concerns identified by survey respondents. Rates show the percentage of respondents who selected either “Moderate Problem” or “Significant Problem.”





POLICY PERSPECTIVES

Listed below are 9 policy areas established by CityHealth to mark a community's "progress in adopting evidence-based policy solutions that will help them provide access for everyone to have a safe place to live, a healthy body and mind, and a thriving environment."

Community support for these policies was collected using the 2023 CHA Survey.



Policy in Place



Related Policy in Place



No Policy in Place

COMPLETE STREETS

Focuses on street lighting, landscaping, sidewalk quality and coverage, traffic calming measures, and connectivity of pedestrian walkways, bike lines, and crosswalks.



79%

CITY SUPPORT-
CHA SURVEY

FLAVORED TOBACCO RESTRICTIONS

Limit which flavored tobacco products can be sold as companies market certain flavors at young people.



40%

CITY SUPPORT-
CHA SURVEY

ECO-FRIENDLY PURCHASING

Helps to reduce or end the purchasing of products with toxic chemicals for city buildings.



79%

CITY SUPPORT-
CHA SURVEY

SAFER ALCOHOL SALES

Can range from licensing to zoning changes – in which cities can specify the number, density, and location of alcohol outlets in a given area



45%

CITY SUPPORT-
CHA SURVEY

HEALTHY RENTAL HOUSING*

Ensure minimum safety standards and provide avenues for tenants to have recourse when their landlords do not meet these safety standards.



79%

CITY SUPPORT-
CHA SURVEY



POLICY PERSPECTIVES

SMOKE-FREE INDOOR AIR**

Prohibits smoking in indoor spaces and designated public areas. Cities can choose whether to include marijuana use.



64%

CITY SUPPORT-
CHA SURVEY

LEGAL SUPPORT FOR RENTERS

Ensures that tenants have access to legal representation during eviction proceedings.



68%

CITY SUPPORT-
CHA SURVEY

ACCESSIBLE PRE-K

Provides early education experiences to all families within a jurisdiction, regardless of their ability to pay.



70%

CITY SUPPORT-
CHA SURVEY

GREENSPACE

Work to ensure access to open spaces including walking trails and public parks.



79%

CITY SUPPORT-
CHA SURVEY

*Sugar Creek requires inspections before rental units can receive a permit/certificate and require a routine inspection.
**Sugar Creek prohibits smoking in some public spaces, but allows smoking in designated areas and in certain public businesses.

SOURCES

DEMOGRAPHICS & SOCIOECONOMICS

US Census Bureau. ACS. American Community Survey, 5-Year Estimates. US Census Bureau. <https://data.census.gov/>

ACS 5-Year Estimate Ranges for Population Graph:

2011-2015 (2015), 2012-2016 (2016), 2013-2017 (2017), 2014-2018 (2018), 2015-2019 (2019)

All 2020 data from the 2016-2020 ACS 5-Year Estimates.

Missouri Department of Health and Senior Services.

Life Expectancy. 2021. <https://health.mo.gov/data/lifeexpectancy/>

HEALTH OUTCOMES, HEALTH RISK BEHAVIORS, & HEALTH STATUS

Center for Disease Control and Prevention. Places: Local Data for Better Health; 2023. <https://www.cdc.gov/places>

POLICY PERSPECTIVES

CityHealth. 2023. <https://www.cityhealth.org/>

Jackson County Public Health. 2023. <https://jcph.org/>

Policy Map. 2023. <https://www.policymap.com/>

COMMUNITY HEALTH ASSESSMENT SURVEY RESULTS

Jackson County Public Health. 2023. <https://jcph.org/>